







**PROJECT DATA**  
STARLING KALISPELL

**PROJECT OWNER**  
KILDAY & STRATTON  
2880 Technology Blvd W, Suite 271  
Bozeman, MT 59718  
(406) 577-2028

**ENGINEER**  
FOLEY ENGINEERING INC.  
105 Village Loop Suite B  
Kalispell, MT 59901  
(406) 314-6490

**LANDSCAPE ARCHITECT**

DESIGN 5, LLC  
Troy Scherer  
111 N. Tracy  
Bozeman, MT 59715  
(406) 587-4873

**SHEET INDEX**

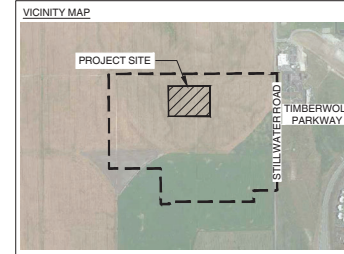
L000-	SITE PLAN- SITE PLAN
L001-	NOTES AND LEGENDS
L200-	PHASE 4 OVERALL HARDSCAPE PLAN
L201-	PHASE 4 DEDICATED PARKLAND HARDSCAPE PLAN ENLARGEMENT
L300-	PHASE 4 OVERALL TREE PLAN
L301-	PHASE 4 DEDICATED PARKLAND PLANTING PLAN ENLARGEMENT
L500-	LANDSCAPE DETAILS

NOTE: PLAYGROUND DESIGN SUBMITTAL SHEETS ATTACHED TO END OF SET

**REQUIRED PARKLAND DEDICATION**  
THE APPLICANT IS REQUIRED TO DEDICATE 0.03 ACRES OF PARKLAND PER LOT.

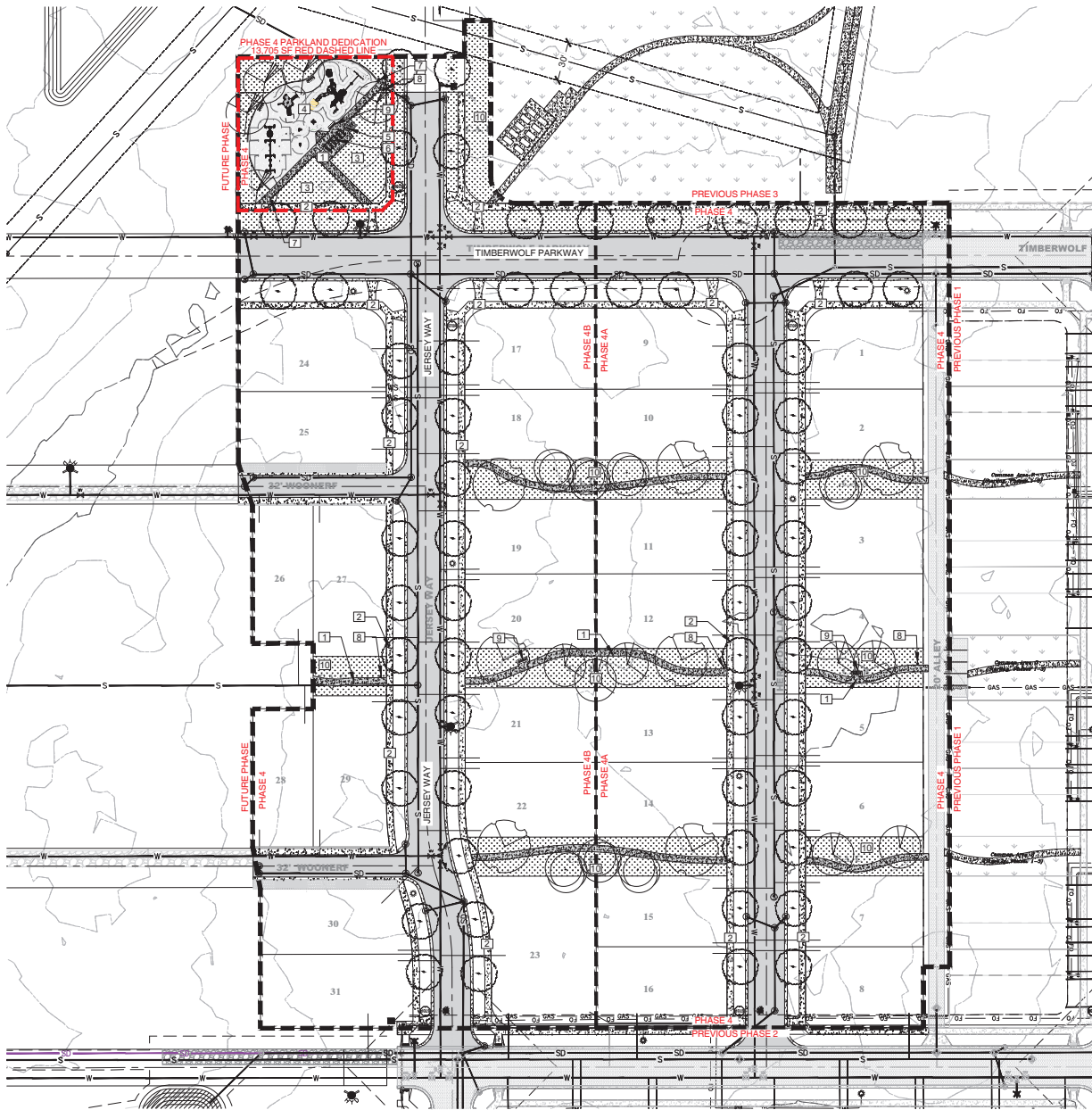
**STARLING SUBDIVISION PHASE 4**  
TOTAL LOTS: 31  
TOTAL PARKLAND REQUIRED: 0.93 ACRES  
PARKLAND PROVIDED PHASE 4: 0.31 ACRES  
PARKLAND SURPLUS PROVIDED PHASE 1-3: 0.369 ACRES  
TOTAL PARKLAND PROVIDED PHASES 1-4: 1.299 ACRES

\*THE SURPLUS OF 0.369 ACRES WILL BE ADDED TO FUTURE PHASES

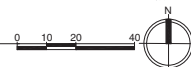


**KEYNOTES**

- 1 CONCRETE PATHWAYS
- 2 CONCRETE BOULEVARD SIDEWALKS, SEE CIVIL
- 3 PLAY LAWN AREA
- 4 MAIN PLAYGROUND AREA
- 5 BIKE RACKS
- 6 PICNIC TABLES
- 7 TRASH RECEPTACLE
- 8 PET WASTE RECEPTACLE
- 9 BENCH
- 10 COMMON AREAS



1 L000 Site Plan- Phase 4  
1" = 20'-0"



Starling Subdivision  
Phase 4  
Kalispell, Montana



date	issue
12/20/24	Phase 4 SPP

Site Plan- Phase 4

L 000

drawn by: KCHMHU checked by: TMS

file name: z:\starling\kalispell\l000\01\_albas\phase\_4\l000\_starlingph4\_landscape.dwg