

STARLING KALISPELL, MT



TIMBERWOLF PARKWAY

Starling Kalispell
Narrative

The Starling Kalispell neighborhood is 58-acre property that is located at the intersection of Stillwater Road and Timberwolf Parkway. The property, which is approximately 4.0 miles northwest of downtown Kalispell, is situated with mountain views, close proximity to retail, and walkable to Glacier High School. It is the goal of the community to embrace the property's adjacency to world class outdoor recreation and create an inviting, walkable community. The neighborhood features 3 primary park spaces as well as a network of connected linear parks. The amenities within each space are further described below:

Linear Parks

- Wandering network of walking trails connecting each end of the neighborhood
- Various seating nodes, picnic areas, and passive open green spaces

Park A

- The primary park gateway from Stillwater Road with a walking trail looping through
- Year-round play through multiple raised berms: summer tumbling hill and winter sledding
- Large children's play field, lined with trees for shady seating
- Community garden that serves as an important neighborhood meet-up spot

Park B:

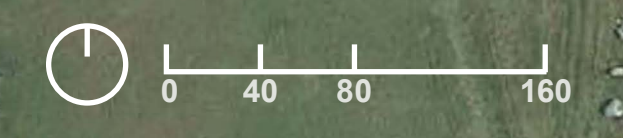
- Primary neighborhood gathering space featuring a shade pavilion & picnic spaces
- Engaging playground area that caters to children of multiple age groups
- Year-round play through two large berms: summer tumbling hill and winter sledding
- Large oval of trees that provides a protected, centralized play lawn and gathering space

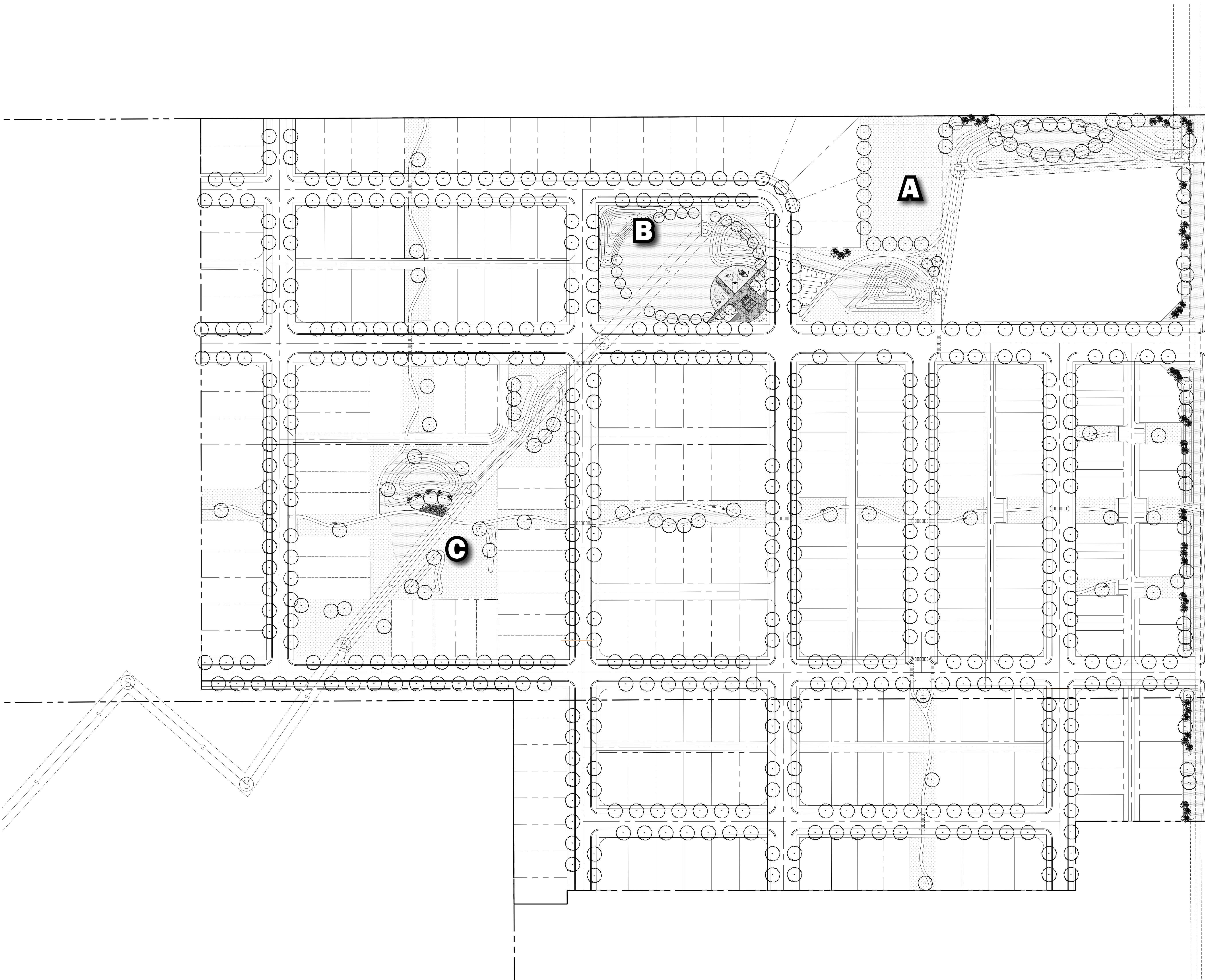
Park C:

- Wide open green space at a node of east/west and north/south linear park trails that provides a safe, protected space for children and pets
- Small gathering space and picnic area framed by a raised berm and hopping boulders
- Small children's play field, lined with shady seating spaces

The network of linear parks and open spaces at Starling is the primary focus of the neighborhood. Combined, the open spaces provide a variety of experiences and opportunities for recreation and play. These opportunities bring value to the neighborhood, create community, and enhance the sense of place within the Flathead Valley.

STILLWATER ROAD

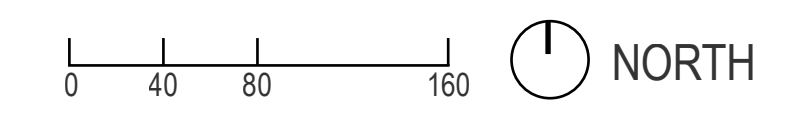


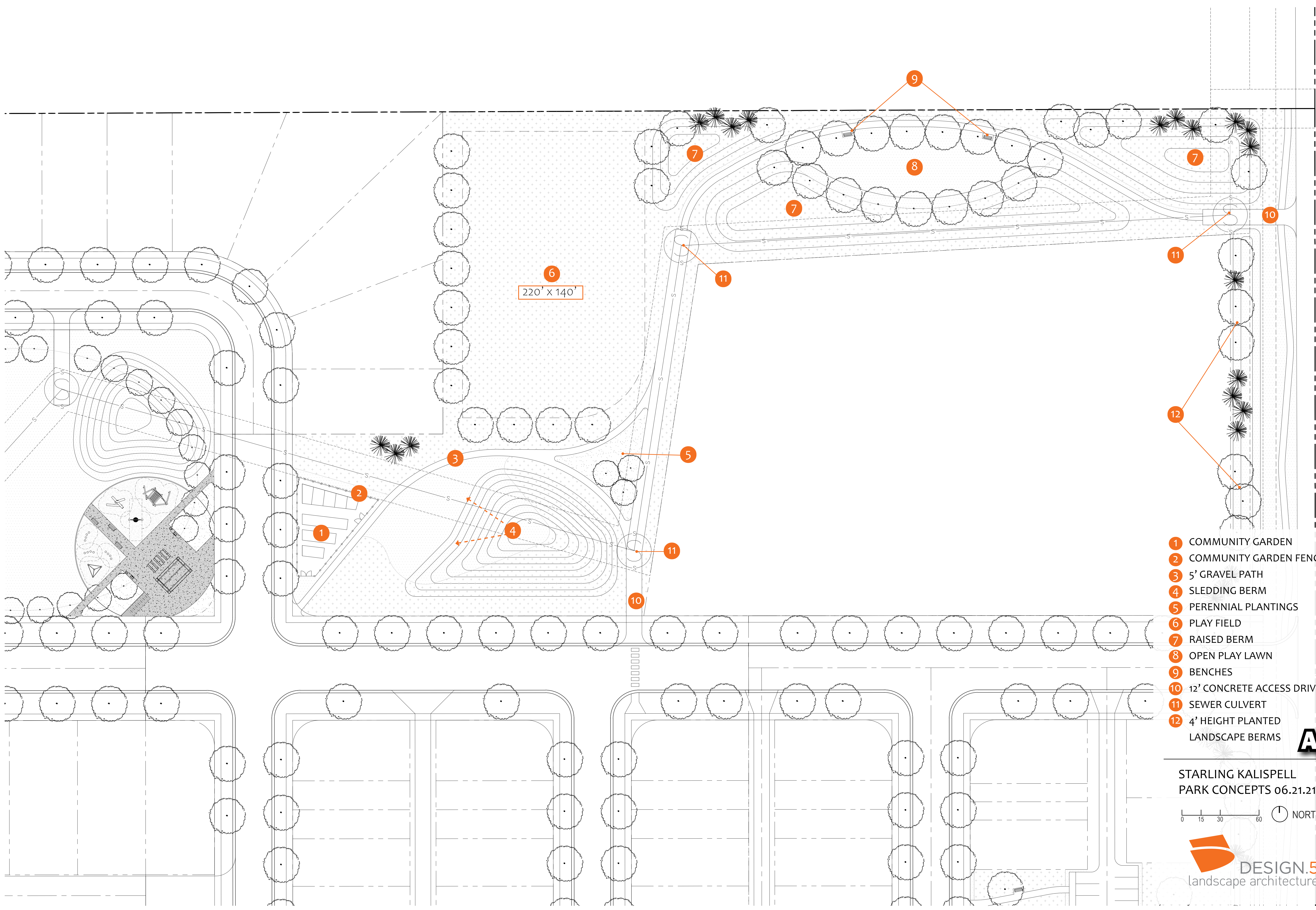


TIMBERWOLF PARKWAY

STILLWATER ROAD

STARLING KALISPELL
PARK CONCEPTS 06.21.21



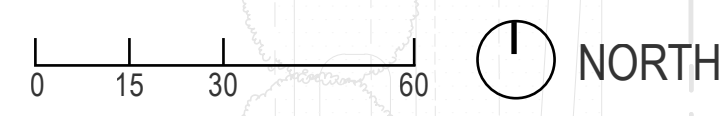


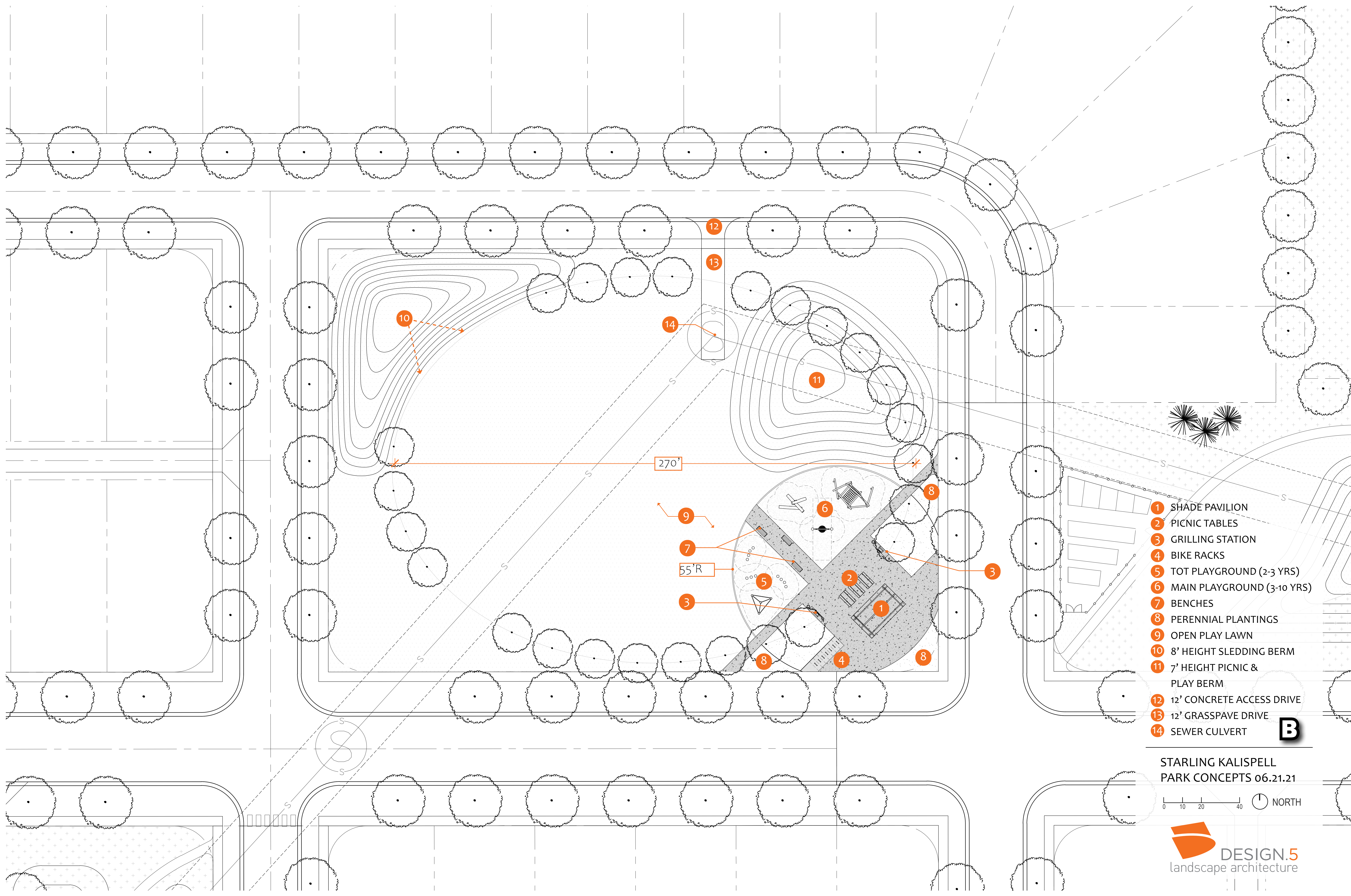
220' x 140'

- 1 COMMUNITY GARDEN
- 2 COMMUNITY GARDEN FENCING
- 3 5' GRAVEL PATH
- 4 SLEDDING BERM
- 5 PERENNIAL PLANTINGS
- 6 PLAY FIELD
- 7 RAISED BERM
- 8 OPEN PLAY LAWN
- 9 BENCHES
- 10 12' CONCRETE ACCESS DRIVE
- 11 SEWER CULVERT
- 12 4' HEIGHT PLANTED LANDSCAPE BERMS

A

STARLING KALISPELL
PARK CONCEPTS 06.21.21

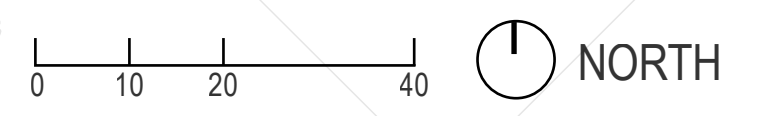


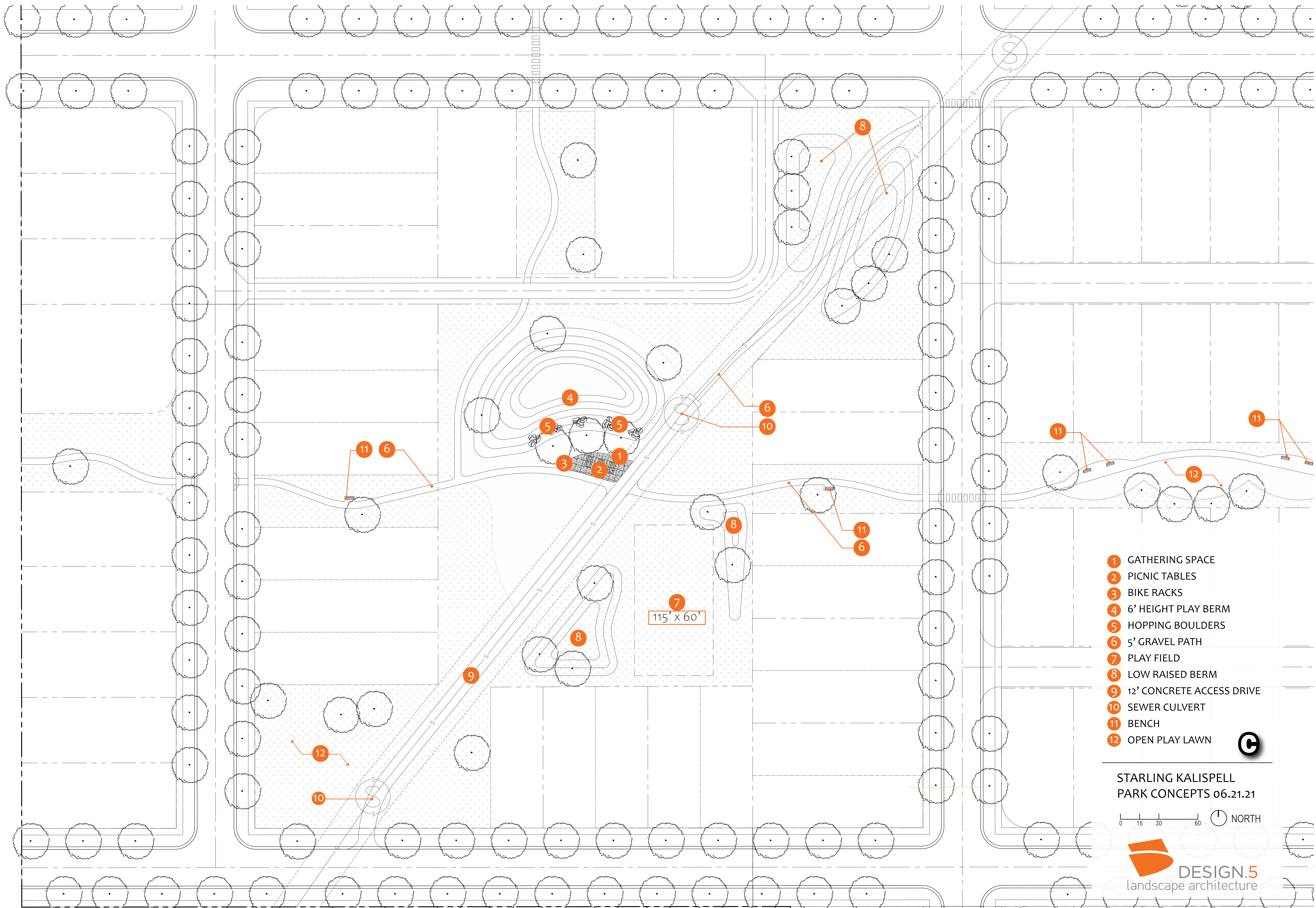


- 1 SHADE PAVILION
- 2 PICNIC TABLES
- 3 GRILLING STATION
- 4 BIKE RACKS
- 5 TOT PLAYGROUND (2-3 YRS)
- 6 MAIN PLAYGROUND (3-10 YRS)
- 7 BENCHES
- 8 PERENNIAL PLANTINGS
- 9 OPEN PLAY LAWN
- 10 8' HEIGHT SLEDDING BERM
- 11 7' HEIGHT PICNIC & PLAY BERM
- 12 12' CONCRETE ACCESS DRIVE
- 13 12' GRASSPAVE DRIVE
- 14 SEWER CULVERT

B

STARLING KALISPELL
PARK CONCEPTS 06.21.21





- 1 GATHERING SPACE
- 2 PICNIC TABLES
- 3 BIKE RACKS
- 4 6' HEIGHT PLAY BERM
- 5 HOPPING BOULDERS
- 6 5' GRAVEL PATH
- 7 PLAY FIELD
- 8 LOW RAISED BERM
- 9 12' CONCRETE ACCESS DRIVE
- 10 SEWER CULVERT
- 11 BENCH
- 12 OPEN PLAY LAWN

115' x 60'

STARLING KALISPELL
PARK CONCEPTS 06.21.21

